



Standard Pressure Gauges

Our standard pressure gauges are all stainless steel construction, are supplied dry but are suitable for glycerine filling.

We stock a wide range of gauges from different manufactures, including Ashcroft, Badotherm & Wika. We are also able to source gauges from other manufactures at your request.

Model:

- 91 - Bottom entry for direct mounting
- 93 - Bottom entry with a rear flange, 3 hole fixing for surface mounting
- 94 - Bottom back entry for direct mounting
- 95 - Bottom entry with front flange for panel mounting, 3 hole fixing
- 96 - Bottom entry with front flange for panel mounting, clamp fixing



Dial Sizes:

We are able to provide pressure gauges in the following sizes, 63mm, 100mm and 160mm. These are our standard size gauges, but other sizes up to 250mm can be provided.

Material:

Case, bezel & flange	- 304 stainless steel
Movement	- 304 stainless steel
Bourdon tube	- 316 stainless steel
Connection	- 316 stainless steel



Other materials can be supplied upon request

Connection Sizes:

For 63mm gauges:	1/4" BSP & NPT
For 100mm & 160mm gauges:	3/8" or 1/2" BSP & NPT

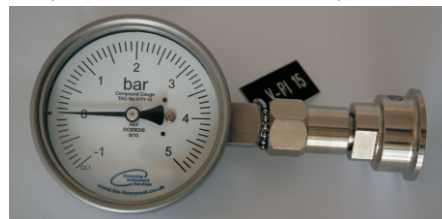
We are able to provide gauge adaptors for our gauges that would suit the connection size you require.

Ranges:

We can supply our pressure gauges from 30" Hg vacuum up to a maximum 16,000 psi, either dual or single scale.

Accuracy:

Conforms to BS EN 837-1 1998 as a minimum



Options:

All our pressure gauges can be fitted with options such as electrical contact units or chemical/hygienic seals (Flanged or Screwed connections)



For Sales or further information contact our Sales Engineering team

Knowsley Instrument Services Ltd, Unit 10 & 11 Lodge Works, Ashcroft Road
Knowsley Industrial Park North, Liverpool. L33 7TW. UK.